

lapland

www.funwithsanta.co.uk



welcome to lapland

There is no better place to visit especially during the Christmas period. A truly magical place, deep inside the arctic circle, surrounded by National Park, where the wonderful scenery, the magical atmosphere and of course the cold, cold air combines to take your breath away. A place where all your Christmas dreams can come true. Children please keep a watchful eye out as you could see Santa travelling through the village on his sleigh pulled by one of his favourite reindeers, or maybe if you are really lucky he may pay a visit to your cabin.

Imagine dashing through the woods on a sleigh pulled by reindeer, or across a frozen lake pulled by huskies, or perhaps you would prefer to try your hands on a snow mobile. Speeding through the woods at night to a clearing for a coffee break and quiet reflection under the night sky, with the hope of seeing the Northern Lights. There are plenty of different experiences for you to try out in Lapland. Then at the end of a tiring day what better way to relax than with a drink in front of a blazing log fire, or maybe make use of the sauna in the cabin!



cabin location

Our cabin, named Dasher, is located in a picturesque woodland setting, with access at the back of the cabin to the cross-country ski tracks. There is a 718 bus stop just down the road where you can catch the bus to the ski fields, the journey takes about 15 minutes. The supermarket is about 800 metres away, more importantly the cabins are very close to Santa's house, so if you look carefully through the trees you might catch a glimpse of the man himself.



welcome to lapland



A traditional resort nestled in stunning woodland surrounded by the seven fells of Ylläs, Kesänki, Lainio, Kulaas, Kuer, Pyhatanturi and Aakenus. At the centre is the Äkäs lake, which in winter is great for cross country skiing.

The Ylläs fell is 718m and boasts the longest down hill run in Finland. There are 69 runs of which 28 are flood lit, generally the runs are wide and uncrowded. The lifts are T-bar and button pulls on the lower slopes, with a chair lift on the Äkäslompolo or Northern side and a gondola on the Ylläsjärvi or southern side of the fell. They are now operating an electronic free motion lift pass system. If you fancy giving cross country skiing or snowmobiling a try there are 320km of groomed tracks in and around the village, of which 38km are

illuminated, with various cafes and cooking shelters on route. You can also enjoy trekking through this beautiful snowy landscape as there are plenty of marked tracks, one of which is out to Velhon kota, which is well the effort.

There have been a lot of improvements to the facilities at the slopes since the summer of 2007, culminating in the opening in 2009 of the new ski centre, which has a buffet and a la carte restaurant along with café and bar. There is an extensive sports shop, hire service and ski school situated on the ground floor along with a mini market. Below the slopes at the Kellokas Nature Reserve there is a restaurant, information centre and museum.

Down in the village there is a small shopping mall with a variety of souvenir shops, bars and cafes, behind this you will find the supermarket, off-licence and pharmacy. There are also a variety of other restaurants, cafes, sports shops and souvenir shops located around the village.

the seasons in ylläs

The snow starts to melt at the beginning of May, heralding the start of Spring, when the soft green landscape of Lapland is once again revealed.

Summer in Ylläs is pleasantly warm, you can escape the rat race to the peace and solitude where the reindeer outnumber the locals. You can go hiking in the mid-night sun, a truly unique experience. There are plenty of other activities such as Nordic walking, roller skiing, fishing, golf or just relaxing in the sauna. The mid-night sun is between June and July.

Autumn is a wonderful time of the year to visit, the woodlands are a blaze of colour and the blueberries are ready for picking. The reindeer wander through the village and graze right outside the back of the cabins.

The snow starts falling towards the end of September, getting ready for another ski season, which will last until the end of April. The polar nights are between December and January.

äkäslompolo

äkäslompolo

out and about in äkäslompolo



poro restaurant

Located in the Lapp Village, which is about 300m from the cabin. The Poro restaurant is well worth a visit, they serve Lappish style meals and the restaurants interior is decorated with lots of traditional Lappish artefacts. Typical menu of reindeer meat and mashed potato with berry dressing, followed by pancakes cloud berry sauce and ice cream, with coffee for around €33.00 (2017).

pizzeria/evaskori

This is located on Tunturintie opposite the shopping mall. Walk down Teerentie at the end turn left into Kaulavaarantie and follow the road bearing right all the way to the bottom, then turn left in Tunturintie, the Pizzeria is opposite the small shopping complex.

julli's restaurant/bar

Julli's restaurant/bar is located about 800m from the cabin, walk down Teerentie at the end turn left into Kaulavaarantie and follow the road bearing right all the way to the bottom, cross the main road and turn right and you will find Jullies on your right. This is a reasonably price restaurant nice food and large portions, very popular with families, you can watch Sky TV here and they regularly have live bands. They serve a selection of pizzas, burgers and a large portion of chips approx from €13.00 (2017).

ylläksen kaivohuone

Ylläksen Kaivohone is located about 800m from the cabin, opposite Julli's restaurant/bar. They have live bands most nights of the week. The green light above the door indicates when they are open.

äkäs hotel

The Äkäs Hotel provides nightly entertainment. It is very popular with the Finnish people they come from miles around for the excuse me dancing. They also have a variety of live bands. The Äkäs Hotel is located about 1km from the cabin, passed the Ylläksen Kaivohuone, take the first road on the left Äkäsentie.

ylläs humina hotel

Located about 2.5km from the cabin, walk down Teerentie at the end turn left into Kaulavaarantie and follow the road bearing right all the way to the bottom, cross the main road and turn left and follow the road to the T-junction turn right and follow the road for about 1km the YlläsHumina Hotel is on your right. You can eat in the main restaurant or the pub, on Mondays, Wednesdays and Fridays they have themed buffet meals, Russian, Lappish and seafood. In the Pub they hold Karaoke and Ski boot dancing.

Rouhe restaurant

Located about 1.5km from the cabin, walk down Teerentie at the end turn left into Kaulavaarantie and follow the road bearing right all the way to the bottom, cross the main road and turn left and follow the road to the T-junction, the restaurant is across the road and just over to the left. Here they serve a mixture of international food, including pizza and traditional Lappish menus.

supermarket, pharmacy and off-licence

These are located about 800m from the cabins, walk down Teerentie at the end turn left into Kaulavaarantie and follow the road bearing right all the way to the bottom, cross the main road and turn left and the supermarket is on the right hand side, behind the shopping complex. They stock most things, some brands you will recognise others will be something new to try. There is also a pharmacy off-licence and cafe within the supermarket complex.

snow fun safari office

Is located about 500m from the cabin, walk down Teerentie at the end turn left into Kaulavaarantie and follow the road bearing right follow the road down and their offices are on the right.

mediylläs

Mediylläs is a private medical centre located in the Äkäs Feel Good Centre behind the Äkäs hotel.

ylläs avain

They are located next to the shopping complex on the main road through the village, about 800m from the cabin. They are the providers of our key holding, maintenance and cleaning, from here you are also able to use the internet, hire DVD's and borrow books.

doctors

This is located in front of the Äkäs hotel. There is not always a general practice doctor on duty, sometimes it will be a visiting specialist. The cost is around €60. There is a Health centre which is free of charge but it is approx 40km away with a round trip taxi costing about €45, to use the Health centre you will require your passport and E11 form, which are available from UK Post Offices prior to your trip. The nearest hospital is approximately 200km away.

searching for Santa

(available on certain dates in December)

The perfect Christmas experience for the whole family! You will be collected from the cabin and taken on a short journey into the forest. Once in the forest you will be met by one of Santa's Elves who will be waiting to take you along a candle lit pathway to the Elves cottage, here you will be able to help Mrs Claus decorate some of Santa's favourite gingerbread biscuits and also make some traditional Christmas decorations.

One of the Elves will take each family separately on short snowmobile sled and reindeer sleigh ride searching for Santa, who resides in his cottage nearby. Keep a look out for the tell tail sign of smoke rising from the chimney of Santa's cottage. Once in Santa's cosy cottage you will be able to ask him about his reindeers and any other special questions you may have. Santa will also have a small gift for each child. It will soon be time to say your good-bye's and for his Elf to take you back to their cottage, where you can continue having fun playing with the cross country skis, tobogganing, & kick sleds in their back yard. Of course no outdoor activities would be complete without a sausage grill for you to enjoy.

Duration 2.5 hours

By Special Invitation

Santa will visit you at your cabin

The snow is thick and sparkling outside, the cabin is warm and cosy but it's time to put on your thermal suits and make your way outside to see if Santa is coming. Keep a watch out for Santa coming down the pathway on his sleigh pulled by one of his reindeers. This wonderful man will spend some time talking to the children telling them some of the magically things about his Lapland home, about his reindeers and all his helpers. He will bring with him a small gift for each child. Then he will take you on a short sleigh ride, sadly all too soon it will be time to say your goodbye's to Santa.

This will be a truly magical experience, with amazing photo and video opportunities.

Duration about 45 minutes



visiting santa

winter activities

** husky safaris

Farm Visit And Sled Ride

Your visit will be by bus to a local husky farm where the eager Siberian Huskies will be waiting for you. You will take part in a speedy dog sled drive through the snowy forest. Two people sharing the sled taking turns in driving! Afterwards around an open fire the guide will tell you about the life of the dogs, you will also be able to enjoy grilled sausages and a hot drink.

Duration: 2-3 hours, 5km-9km sleigh ride

Extended ride 5-6 hours, 37-41km

** snowshoe treks

The Old Woman of Kentänpää

The ancient Finns roamed the forests on wooden skis fashioned from birch and the Lapps sped across the snow in reindeer sleighs. On this trip you will head for the fells on snowshoes, following the gullies carved by the melting Ice Age snow for about 3km up through the rugged scenery of Ylläs. The leisurely pace allows you time to observe the world around you and with any luck you may catch a glimpse of the ancient spirits of Lapland. You will stop for hot drinks around an open fire in one of the many fell shelters.

Duration: 2.5 hours, 4-5km

Seeking the Northern Lights by Snowshoe

When it gets dark you will start your exploration for the magical Aurora Borealis. You will walk through the silent dark forest to the fire place where we stop for a hot drink. The guide will tell you facts about the Northern lights and if you are lucky enough, you might see the magnificent lights of the Arctic sky. Snowy nature looks interesting when it is dark and you can definitely feel the mystic of Lapland.

Duration: 3.5 hours, 4-5km

* Ice Fishing

from Äkäslompola

You will drive the snowmobiles to a wilderness lake, where you will be shown the art of ice fishing. In case you don't manage to catch any fish there will be coffee and grilled sausages cooked over an open fire in a traditional Lappish tepee.

Duration: 3 hours and about 12km

* Snowmobile Safari

* snow what

An exciting snowmobile safari for beginners as well as more experienced drivers, after the safety and driving instructions you will drive by snowmobiles through the snowy forests, on a lake ice and wetlands. Our skilled snowmobile guide teaches you driving techniques, how to cross the roads and drive safely on the ice. You will stop for a cup of hot drink and a doughnut on the way.

Duration: 2.5 hours, 20km

** lainio snow village

Snowmobile Safari

This safari heads for magnificent Snow Village where you will see all the beautiful snow and ice sculptures.

All the rooms in snow hotel are individually decorated with different themes and sculptures, lights and details. Something very extraordinary is the restaurant and chapel built from snow and ice! After having a soup lunch in the Lainio Inn, it will be time for the return journey.

Duration: 4-5 hours, 70km

** maybe the northern lights

This safari takes you into the forest at night so you can try to catch a glimpse of the Northern Lights. You will travel at a steady pace, which gives you a chance to see the forest at its most magical. After about 12km you will come to a kota, here you will take a break, sharing coffee, buns and Lapp legends around an open fire. All too soon it will be time to return to the village.

There will be a couple of stops on route, so you can watch the night sky to see if the Northern Lights are performing their magic.

Duration: 2-2.5 hours, 20-25km

*** ylläs 718

We recommend this trip for people with a taste for speed and magnificent scenery. Heading first for Ylläsjärvi village along a snowmobile route, you then climb about four hundred metres from Iso-Ylläs ski centre to the top of the fell in one exhilarating dash, before continuing down to Äkäslompola, where you stop for coffee in a log restaurant with time to admire the view.

Duration: 2-3 hours, 35km.

* All activities include transport from cabins, all equipment supplied and have a minimum of 4 people.

* easy ** medium *** hard

skiing

down hill

Altitude: 835-2355ft (255-718m)

There are 69 runs of which 28 are illuminated. The lower lifts are generally button pulls, with the higher ones being T-Bars. There is a chair lift to the top on the Äkäslompolo side and a gondola with a special sauna carriage on the Ylläsjarvi side. At the top there is a café and restaurant if you are in need of refreshment and want more time to admire the view.

It's an ideal resort for beginners as the runs are wide and uncrowded with little or no queues for the lifts. There are plenty of runs challenging enough for the intermediate skiers, including the longest run in Finland. It's a bit limited for the advanced skier but there is some nice off piste skiing. Ski school is in small groups with very friendly English speaking instructors.

cross country

320km groomed tracks, of which 38km are illuminated, there are also 13 cafés (Koti) on route. These tracks can be accessed directly from the cabins. For those who haven't tried this before there is always the cross country ski school.

snowboarding

There are snowboard parks, streets and pipes on both sides of the fell.

ski lessons

We are able to pre-book either private family lessons or if you wish to be part of a larger group we can book you into the Ski School.

ski equipment

We are able to pre-book all ski equipment and lift passes for collection on arrival at the Ski Centre. Cross country equipment can be collected for the Sports Shop down in the village.



trips all year round

pony trekking to a lappish tepee

After dressing warmly everyone will be allocated a horse for the tour. First you will be familiarised with the basics of riding an Icelandic horse, then you will have time to put it all into practice in the riding rink. After a short session you will be able to take the horses out into the forest.

You get to stop half way for refreshments in a Lappish tepee of coffee and sausages over an open fire or buns.

On this trip in winter and spring sleigh rides are available, sleighs will take up to 3 adults and a child under 7.

Duration is 3 hours.

pony trekking in the wonderland

After dressing warmly everyone will be allocated a horse for the tour. First you will be familiarised with the basics of riding an Icelandic horse, then you will have time to put it all into practice in the riding rink. After a short session you will be able to take the horses out into the forest.

Duration is 2 hours.

All equipment supplied.

Please note: Under 12 year olds must be experienced riders.



day at sami's reindeer farm

Your visit will take you to Sami's reindeer farm, where you will be introduced to the family all in traditional dress. Marjut will then tell you all about life on a reindeer farm. You will also visit the reindeer coral where you can hand feed some of the reindeers and take part (winter only) in a reindeer sleigh ride. After this you will share coffee and homemade sweet bread around an open fire followed by soup lunch. You will also get a chance to visit Marjut's arts and crafts studio which is in the old homesteads. During the summer the sleigh ride is changed to, trekking with the reindeers.

Duration: 4 hours, 3km sleigh ride

day at reindeer farm

Your visit will take you to a Lappish country house in Torassieppi Muonio, the home is over one and a half century's old. It is one of the rare places that survived the Second World War. You will visit a museum of reindeer herding and farming. The housewife of the farm is the sixth generation. She will tell you all about reindeer herding with slides and artefacts. You will also visit the reindeer coral and take part (winter only) in a 3km reindeer sleigh ride. After this you will be served a soup lunch in a traditional Lappish hut. On the way back to the village you will call in at a reindeer meat shop. During the summer the sleigh ride is changed to, trekking with the reindeers.

Duration: 5 hours, 3km sleigh ride.



white water rafting and husky dogs *

This is a car tour to Muonio, where you visit the Arctic sled dog centre, here over 350 husky dogs spend their summer holidays. After the guided tour at the farm, you will experience the border river between Finland and Sweden by rubber raft. Along the 6 km long route there are several rapids. After the rafting you will enjoy coffee on the river bank and everybody will be awarded a certificate.

Duration: 4-5 hours, 180km

Price includes: coffee with a bun.

Supplement: Lunch

canoe and kayak paddling school *

The interesting and fun paddling school takes place by the lake Ylläsjärvi, next to the Ylläs Adventure Safari House. You will receive instructions regarding all the necessary equipment for paddling. Learn to step into the vessel and techniques of paddling. Everyone can test both canoe and kayak. After the instructions you will take a short paddling excursion on the lake where you will practice different techniques.

Duration: about 3 hours

cycling from Ylläsjärvi to Äkäslompolo **

A full day cycling trip to the village of Äkäslompolo from Ylläsjärvi. Your trip starts with pedaling toward the villages of Luosu and Hannukainen stopping to admire interesting sights on the way. In Äkäslompolo you will have lunch and be able to do some souvenir shopping, before heading back to the village of Ylläsjärvi you will travel via the beautiful scenic road and stop at the nature centre Kellokas on the way.

Duration: about 6-8 hours, about 55km -

Price includes: snack and lunch.

info

A variety of equipment is also available for you to rent, such as bikes, kayaks and canoes, by the day, or for a whole week. All equipment required for your trips are supplied.

With all our trips you will be collected from the cabins and taken back to the cabins after.

We also run week long summer camps including full board with fully guided itinerary, price and details on request.

hiking on Ylläslompolo nature trail *

On the Ylläslompolo nature trail you will get to know the interesting swamp nature of Ylläs area by climbing up the bird watching tower and admiring the opening scenery. You will then continue hiking on the duckboard trail to the shore of a wilderness lake, here you brew coffee and grill sausages by an open fire in a Lappish tepee. The guide will tell stories of old mars meadow culture, the old forests and swamps.

Starting/return point: Ylläsjärvi

Duration: about 3,5 hours, 4,5km

Price includes: coffee/tea or hot juice and a sausage.

nordic walking/hiking under the midnight sun **

Your Nordic hike will start by walking up the hillside of Ylläs toward beautiful gulch. In the crossing of the fell streams you stop to drink fresh water before continuing your hike to the natural spring where you will brew coffee by an open fire and grill sausages before hiking back to the hotel.

Duration: about 3,5 hours, 5km.

Price includes: coffee/tea or hot juice and a sausage.

finnish lakeside sauna *

The Finnish sauna and lake belong together when talking about Finnish traditions! Our lakeside sauna offers a unique experience to try the most Finnish of all – sweating in a hot sauna and swimming in the cold lake. After the sauna you can grill sausages by an open fire in our log cabin Jussan Pirtti. Separate sauna turns for men and women.

Location: Ylläs Adventures

Duration: 1,5 hours

Price: includes towel - Supplement: sausages, beverages

summer and autumn trips

fishing golf

Are you looking for somewhere different to go fly fishing, why not try Lapland, our guide with all his local knowledge will take you to some of the more remote fishing locations, on the rivers and lakes, fishing for midget trout, brown trout grayling and salmon.

The Tornio-Muonio River forms the border between Finland and Sweden and is one of the major rivers in Europe, travelling some 2000 miles through Finland alone. It is also the longest free flowing salmon river in Europe, producing annually an average of half a million salmon smolts. Many fishermen come to fish for the large wild salmon, but the Muonio is an excellent source of grayling, including many fish of specimen size, with the average size approximately 35cm and about one pound. Large sea trout can be found in the lower river and some of the tributaries, brown trout are also present but fairly rare.

The Äkä River has very good grayling and sea trout fishing.

Guided day and overnight trips can be arranged, prices on request.

Levi has an 18 hole golf course, located in a place of exceptional natural beauty by a lake at the foot of the surrounding fells. The spacious course with its variable terrain offers a challenging environment for golfers of all levels. What is unique about this course is that it allows you to play day and night, even under the midnight sun!

A golf practice area with a driving range and a pitch & putt course are also available.

The golf course is approx. 45 minutes drive from the cabins.



wildlife watching and photography



We are now acting as agents for the Wild Brown Bear Company in Finland and are able to offer bear watching and photography trips to Kuhmo on the Finnish Russian border.

The Wild Brown Bear site is located at the site of the old Finnish Russian border. The accommodation rooms are basic, but comfortable and clean, with en-suite shower rooms. Meals are taken in the new purpose built building housing the auditorium, library and dining room. There is also a smoke sauna down by the lake for guests to use.

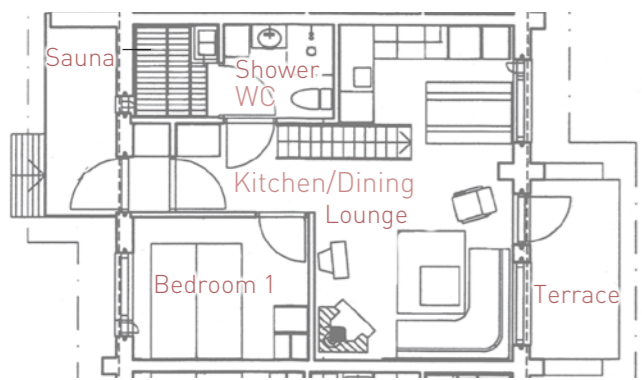
After your safety briefing you will be provided with you evening snacks and drinks and taken down to the bear hides, which are located 700m from the accommodation for your evening of viewing. If you are lucky the bears, wolverines, foxes and eagles will come to the area.

There are about 12 different hides located around the lake and the bears come out of the forest searching the wetland area for the tip bits that have been placed the other side of the lake to encourage the animals into the area. Considering their size the bears just seem to materialise out of the forest it's an amazing sight and well worth the wait.

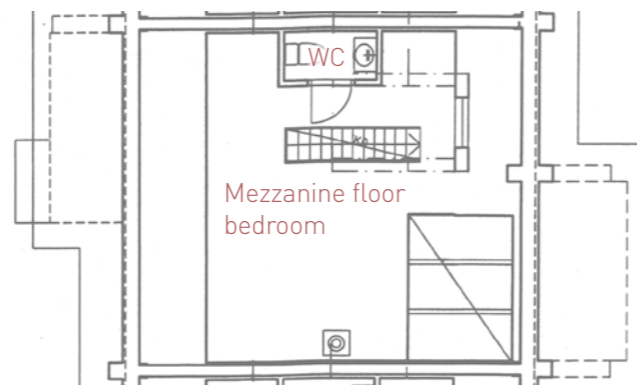
Trips are available April to September.

the wild brown bear site





Ground Floor



First Floor

DASHER
1 bedroom + 2 further beds
on mezzanine area

your cabin

The Cabins typically have 1 to 3 bedrooms. Accommodation for larger groups is also available on request.

A one bedroom cabin would comprise of a twin bedroom downstairs and a further 2/3 single beds on the mezzanine area. The mezzanine area overlooks the open plan lounge. Some cabins come with an additional upstairs toilet/washroom. There is usually a double sofa bed available as well.

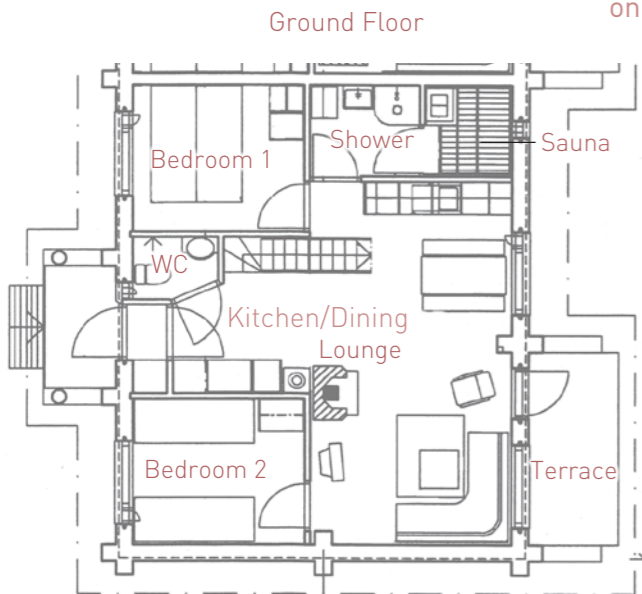
All cabins come with a fully equipped kitchen including fridge freezer, cooker, dishwasher, washing machine and

microwave oven. There is a drying cabinet for all your winter gear and a sauna for you to relax in at the end of a long day. Wireless internet is available in certain cabins and some cabins have outdoor equipment such as sleds, kick sleds and bikes.

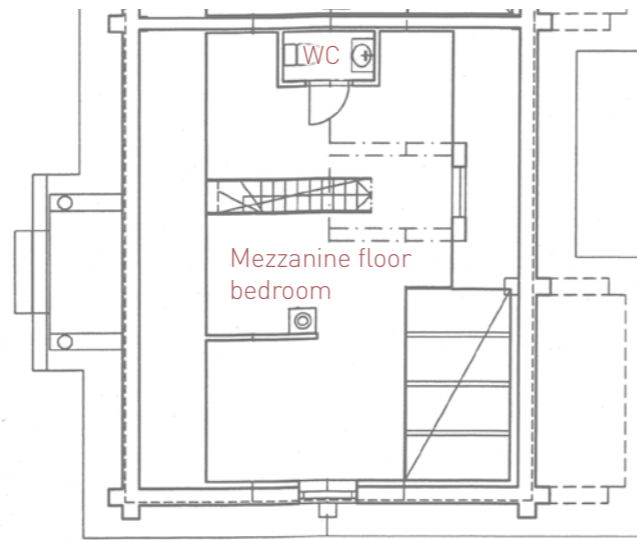
Our Dasher cabin is classed as a 1 bedroom cabin and will sleep up to 4 people.

We can source alternative cabins should our Dasher cabin be fully booked.

2 bedrooms + further beds
on mezzanine area



Ground Floor



First Floor

cabin extras available in all cabins

available for all cabins

- Meals supplied to the cabin including washing up after
- Breakfast or half board meals at local hotel
- Luggage storage for late departures or early arrivals

available in certain cabins

food packs

- Starter Food Pack – Coffee 250g, Tea 50 bags, Milk 1ltr, Juice 1ltr, 1 x loaf of Bread, butter 250g and Jam 230g
- Deluxe Food Pack - As starter pack plus Eggs x 10, bacon 140g, tin of beans & tomatoes, extra loaf, cheese 500g, yoghurt 1ltr, apples 1kg and packet biscuits

other extras

- Beds made on arrival day
- Mid stay cleaning with fresh linen supplied

how to get there

- UK airport via Helsinki to Kittila
- Heathrow to Helsinki approximately 2 hours 20 minutes
- Helsinki to Kittila 1 hour 10 minutes
- Transfer from Kittila to Äkäslompolo approximately 45 minutes.

At your chosen UK airport get your bags checked all the way through to Kittila airport, that way you only have hand luggage in Helsinki.

Helsinki airport is easy to negotiate, but if you only have one hour transit time don't linger too long in the shops as it is quite a walk from one end of the airport to the other, also keep an eye on the departure boards as you may find that the gate number changes for your onward flight. Another point to remember is that from Helsinki to Kittila the seats are unallocated so it's free seating.

Kittila airport is quite small. Your taxi driver will be waiting just inside the luggage claim area, holding up a sign with your name on.

Scheduled Flights

- Finn Air, BA, SAS via Helsinki to Kittila
- Easy Jet from Gatwick to Helsinki
- Internal flights via Flying Finn or Blue 1

Charter Flights

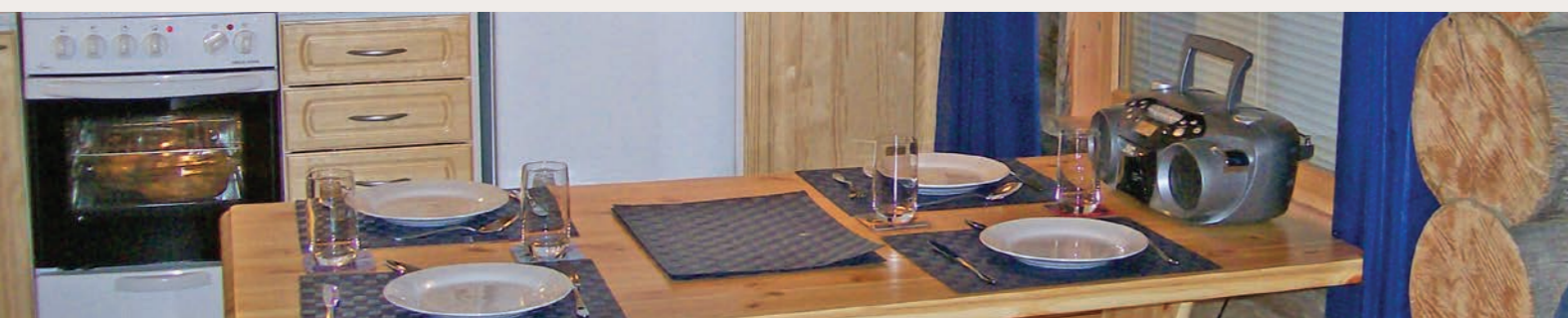
Direct to Kittila during the ski season through Monarch.

Overnight Train (Santa Express)

From Helsinki or Tampere to Kolari www.vr.fi

Transfers

These can be arranged from Kittila Airport or Kolari Railway station or For the more adventurous a snowmobile can be arranged with your luggage sent separately. Not recommended for the month of December.



frequently asked questions

Where is Lapland: Lapland is a vast area spread across Finland, Norway and Sweden, our cabins are situated in the Finnish Lapland.

What is the currency: The currency used is the Euro, all shops and restaurants accept Visa and debit cards. There is a cash machine outside the supermarket.

What is the climate like: Temperatures are between 0 and -25c on average, but can drop to -40c, during the winter months there is only about 5 hours of day light "Grey Light", the Polar nights are between December and January.

What should I pack: Ski clothes or thermal all-in one outer suit, warm clothing, thermal underwear, hats, gloves and scarves, snow boots or decent walking boots. They have a saying in Lapland, "there is no such thing as cold weather its just poor clothing", so be warned.

Is the tap water OK to drink?: The water is perfectly safe to drink.

cost of cancellation

Should you or any member of your party need to cancel your booking once it has been confirmed, you must do so in writing and the charges you incur, which are set out below, depend on when we receive your notification, Any amendment fees cannot be refunded and are payable in full by you.

terms & conditions

Period before scheduled departure date within which notification is received by us	Charge as % of total holiday cost including supplements and extra packages
More than 56 days	Deposit
43-56 days	60%
29-42 days	70%
22-28 days	90%
0-21 days	100%
Departure date no show	100%

deposit

£100 per person is payable at the time of booking, balance is due 12 weeks before departure date.

our liability

Please note that we take no liability for injury, illness, death or consequential loss suffered by you or any member of your party.

hazardous activities

If you participate in any local activities such as tobogganing, snowmobiling, skiing, husky and reindeer safaris, bear watching etc you do so at your own choice and liability.

You should check your insurance policy for details of cover.

amendments

There will be a £15 charge for any amendments made to your holiday reservation after you have received written confirmation from us.

Items in the brochure may vary slightly from the description.

All prices correct at time of printing



Children In Need Appeal 2009/12

Children in Need 2009 Diary

In 2009 Fun with Santa took part in the BBC Radio 2 'Auction for things Money Can't Buy'. With the kind co-operation from various companies and restaurants in Ylläs Lapland, we organised a trip to Lapland for a family of 4 plus TV presenters Angellica Bell and Michael Underwood. The BBC also helped by arranging the flights through SAS and Blue 1 and the overnight accommodation. This raised £15,000 for Children in Need.



Itinerary

Thursday 03/12/09	Flew out to Lapland with an overnight in Oulu
Friday 04/12/09	Mini bus transfer Oulu to Ylläs Meal at Saaga hotel followed by Searching for Santa Evening welcome meal at Poro
Saturday 05/12/09	Visit Sami's reindeer farm followed by Lunch at the Wood Jewel in Kolari, Pipola restaurant for tea followed by Maybe the Northern Lights snowmobile trip with Snow Fun Safaris
Sunday 06/12/09	Husky safari at Konijänkä followed by lunch at Y1 Ski Centre Skiing lessons and farewell meal at Äkäs Hotel
Sunday 06/12/09	Journey home

Children in Need 2012 Diary

In December 2012 we organised another Children in Need trip to Lapland, this was auctioned by Paragon at their 'Evening with The Stars' event raising £6,000 for the charity. Again we had the help of many companies in the village. The transfers were thanks to Annen Taksi and Tiina from Ylläsavain helped with co-ordinating.

Itinerary

Thursday 13/12/12	Flew out to Lapland via Helsinki
Friday 14/12/12	Lunch at Routa followed by searching for Santa, with Ylläs Adventures Evening meal at Jullis followed by Northern Lights with Snow Fun Safaris
Saturday 15/12/12	Gondola ride to the top of the Ylläs 718 followed by lunch in the 718 cafe Visit to Sami's reindeer farm and evening meal at the Poro
Sunday 16/12/12	Husky sled rides at Konijänkä, lunch at Ylläshumina, skiing at the Y1 centre Finished off with a farewell meal at Äkäs Hotel
Monday 17/12/12	Journey home

contact details

Jane Warner

address

Fun With Santa Oy
24 Roundhouse Drive
Perry
PE28 0DJ

e-mail: jane@funwithsanta.co.uk
phone: evening 01480 812598

www.funwithsanta.co.uk

